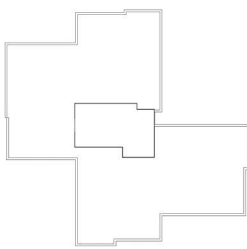
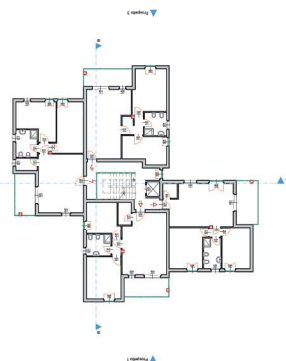


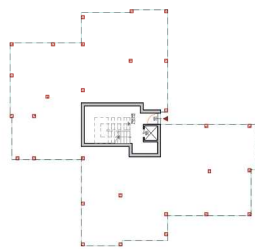
INGUADRAMENTO



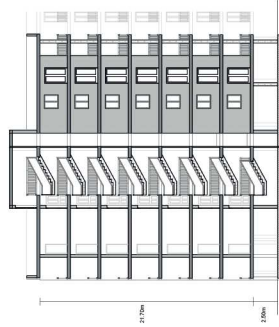
PIANTA COPERTURA



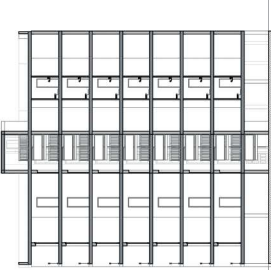
PIANTA PIANO TIPO



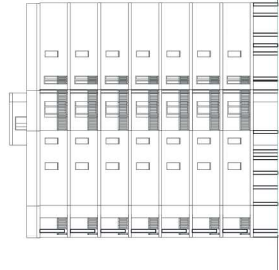
PIANTA PIANO PILOTIS



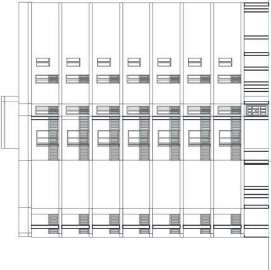
SEZIONE A-A



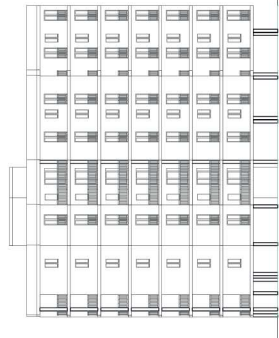
SEZIONE B-B



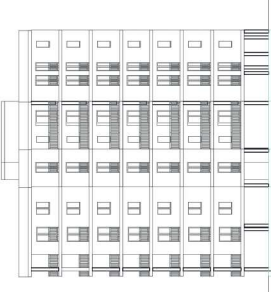
PROSPETTICO 1





PROSPETTICO 2



PROSPETTICO 3



PROSPETTICO 4

 <b>COMUNE DI IGLESIAS</b> (Prov. Carboni-Iglesias)		<b>PROGETTO DI UNA LOTTIZZAZIONE IN LOCALITA' SAN SALVATORE VARIANTE N° 1</b>	
<b>PROGETTO TIPOLOGIA:</b> TIPOLOGIE EDILIZIE INDICATIVE EDIFICIO A TORRE PIANTE SEZIONI PROSPETTI IN PROGETTO		11	
<b>COMITENTE:</b> Sagittarius S.r.l.	<b>ACQUISIZIONE:</b> 107	<b>SCALA:</b> 1:200	<b>DATA:</b> 29-01-2015
<b>ELABORAZIONE GRAFICA:</b>  STUDIO ARCHITETTONICO PIAZZA GARIBOLDI 09100 - IGI TEL. 070/455111 - FAX 070/455112		<b>IL PROGETTISTA:</b> ING. ANTONIO LEONDI	